



“Delivering excellence in Teacher Training, Development and Behaviour Management”

Our fifth edition newsletter!

“Welcome to the fifth edition of the Maiden Erlegh Institute newsletter!”

The new year began with Maiden Erlegh Institute saying goodbye to our current trainee teachers and welcoming ‘second placement’ trainees from other Berkshire Schools. Despite a drop in teacher trainee applications nationwide, MEI has continued to recruit exceptional candidates for our School Direct trainee teacher Programme. We continue to work hard with all of the arms of Maiden Erlegh Institute, you will find a summary of our work below.

Feedback from our Early Career Teachers confirms that they are enjoying the course and making excellent progress in the classroom. Plans are now underway to recruit lead and co-facilitators to support the next trainee cohort.” **Rob Buck, Director of Maiden Erlegh Institute**



SECOND PLACEMENTS

In January, Maiden Erlegh Institute welcomed trainee teachers from other secondary schools to begin their second school placements at Maiden Erlegh School and Maiden Erlegh School in Reading. The 6-week placement allows trainees to develop teaching skills, curriculum knowledge and gain invaluable classroom experience. They have the opportunity to find out which school suits them best and what to look for when they finally apply for a full time role. Trainees are assigned a mentor who they meet regularly to discuss progress, set targets and obtain feedback. MEI run Professional Studies sessions every Thursday covering topics including behaviour, pedagogy, curriculum, assessment and professional Behaviour. One of our trainees, Abida, found her placement really useful. ***“I have really enjoyed my second placement and appreciate my experience here. I looked forward to coming into school everyday and I wish I could have stayed longer! Brilliant staff, resources, facilities and Professional Studies sessions.”***

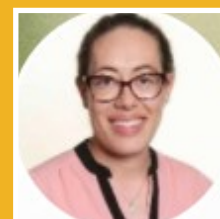


LEADERSHIP COURSES

Maiden Erlegh Institute runs a variety of Trust accredited professional and nationally recognised leadership development programmes for aspiring or new-to-role Curriculum, Pastoral and Senior leaders. It is vital that school leaders are equipped with suitable experience, skills and attributes, and that they receive excellent training and personal development. The CPD programmes consist of seminars run across the academic year. Charlotte Ajewole, pictured below, is the current year 5 and 6 Phase Leader at Great Hollands Primary School, Bracknell. She has found the course very useful. Great Hollands Primary School is a part of the Maiden Erlegh Trust. ***“The range of sessions offered is really varied and applicable to future leadership roles. The most helpful thing about the course is the fact that it is lead by Maiden Erlegh Trust staff, which makes the teachings even more applicable. The ideas shared can be directly applied to what you are leading on. It is a great way to network and meet other colleagues across the Trust who you can learn from.”***



If you are interested in joining the course for September 2022, please email:
meioffice@maidenerleghtrust.org



CEO Update

"This year is continuing to be a very busy one. We are working with a number of schools from all over the region, and further afield, as part of our school-to-school improvement work.

Some of this is alongside our Behaviour Hubs partners and this work is progressing well. Because we work with Trusts, there is a focus on developing a shared understanding of what great behaviour looks like, and then a shared language of behaviour and character. It is a privilege to visit such a range of schools and to work with a wide variety of colleagues. There is a great deal that schools have in common linked to values and expectations, but it is heart-warming to see how thoughtfully each school adapts their strategies to the needs of their students.

Outside our Behaviour Hubs work, we are also working with a number of schools looking at whole school and subject-specific curriculum issues, leadership, personal development, SEND provision, and safeguarding." **Mary Davies, CEO Maiden Erlegh Trust**



TEACH FIRST PLACEMENTS

Maiden Erlegh School welcomed Teach First teachers from John Madejski School, Reading for a one week placement in March. The teachers were based in the Science department and Languages department and delivered lessons, work shadowed teachers and took part in continuous professional development. Connor (pictured), a Spanish Languages teacher was really grateful for his experience.



Connor teaching sixth formers

"I am so grateful to have had the chance to experience life as part of Maiden Erlegh School. I am struck by how self-motivated students are as they hold themselves to account in progressing their learning. This reflects the calm but focussed culture of learning and respect which was clear staff and students have worked hard to foster. In my short visit, I appreciated the students politeness and responsiveness to my lessons. There is a great focus on speaking the target language which is clear in their pronunciation and their confidence and involvement in class activities. I have very much enjoyed stepping in as an "outsider" to these classes and sharing my approach and perspectives such as with objectives, lesson structure and activities and exam techniques which have been instilled in me by my fantastic colleagues at my current school. I hope students have benefited from their short time with me just as I have benefited from my short time with them. It was a particular highlight to conduct an A-level lesson completely in Spanish as my school does not have A-level Modern Foreign Languages. I hope all students continue to appreciate the fantastic work of the staff here and vice versa!"

THAMES VALLEY CHALLENGE HUB



We continue to make strong collaborative progress towards our agreed Hub priorities. Most Hub schools have now received their QAR visit and have found the feedback to be invaluable in helping to drive forward school improvement. Many schools are finalising how to spend their action research proposal grants, to maximise impact on outcomes. Our recent second Hub meeting was hosted by Churchmead School, Berkshire, where we heard from school representatives on subjects such as the Ofsted agenda, and taking staff on a journey of school improvement. We look forward to continuing our work, and further strengthening this important network of school collaboration.



MAIDEN ERLEGH
INSTITUTE

POSTGRADUATE TEACHER TRAINING: SCHOOL DIRECT



Teaching offers you all the opportunities, training, support and rewards you need to build a stimulating and successful career that shapes young lives.

Postgraduate teacher training courses are available across England, led by universities or schools. The course you choose will depend on your subject, degree class and location.

Maiden Erlegh Institute participates in the School Direct Programme of school-led training. We work with The University of Reading to deliver training.

School Direct gives you:

- more time training in the classroom
- the ability to gain confidence through increased contact in a school environment
- Potential to join as a qualified teacher after your training year



MAIDEN ERLEGH
TRUST

All teacher training courses will offer

- qualified teacher status (QTS), which is needed to teach as a qualified teacher in England
- plenty of classroom experience in at least two schools – a minimum of 24 weeks of school experience
- training to meet the Teachers' Standards, which will include classroom management and making your subject accessible to your pupils
- expert academic and practical guidance from mentors and tutors who are there to help you succeed.



Most courses will also offer a postgraduate qualification, usually a Postgraduate Certificate in Education.

Am I eligible?

To be eligible, you'll need to hold (or be predicted) a **2:2 degree** or above and **GCSE Maths C** and **English C**. (Primary trainees also require a GCSE Science C).

Funding your teacher training

You could receive the funding listed below:

- A tax-free £24,000 bursary to train, depending on your subject and degree class
- Tuition Fee and Maintenance Loans, irrespective of whether you received these loans during your undergraduate degree
- Extra funding towards the cost of childcare if you're a parent, additional support if you have a disability or have an adult dependent

Finding the right teacher training course

- Search the government website [Apply](#) to apply for teacher training.
- Take a look at our website and find out more about School Direct. www.maidenerleghinstitute.org
- Register with [Get Into Teaching](#)

In partnership with the
Institute of Education



University of
Reading

Get in touch

0118 926 2467

MEIOffice@maidenerlegthrust.org



@_MEInstitute



March 2022

London & Home Counties Computing Hub Community

Can we support you before Easter arrives? Take a look through our newsletter to see what we have on offer in terms of CPD courses, support and enrichment.

Contact: teachcomputing@lgs.slough.sch.uk **Twitter:** [@CompHubLGS](https://twitter.com/CompHubLGS) **Web:** [LGS Computing Hub](https://www.lgscomputinghub.co.uk)

Secondary CPD for teachers

Complete one of our short courses to get you started.

[Getting started with Python programming – short course](#) 20 April 15:45 – 17:15

[Introduction to Isaac GCSE computer science - short course](#) 21 April 15:45 – 17:15

How about completing one of our full day remote courses.

[Representing algorithms using flowcharts and pseudocode - remote](#) 4 April 9:00 – 15:40

[Supporting GCSE computer science students at grades 1-3 remote](#) 26 April 9:00 – 15:55

[The internet and cyber security – remote](#) 28 April 9:00 – 15:40

[Computer systems: input, output and storage – remote](#) 5 May 9:00 – 15:00

[Search and sort algorithms – remote](#) 9 May 9:00 – 15:15

[Foundation knowledge of computer science for KS3 and GCSE – remote](#) 16 May 9:00 – 15:45

[Python programming constructs: sequencing, selection & iteration – remote](#) 20 May 9:00 – 15:50

[Higher attainment in computer science - remote](#) 20 May 9:00 – 15:30

[An Introduction to algorithms, programming and data in computer science – remote](#) 23 May 9:00 – 15:30

[Python programming: working with data – remote](#) 27 May 9:00 – 16:00

[Fundamentals of computer networks – remote](#) 6 June 9:00 – 16:05

[An introduction to computer systems, networking and security in computer science – remote](#) 10 June 9:00 – 15:00

A new job role and you need support?

[New subject leaders of secondary computing –remote](#) 1 & 5 July 9:00 – 15:00

Ready to take the CSA test and need support?

CS Champion support & Easter egg encouragement

Are you ready to take the 30 minute test or need a few more hours of CPD?

Work with our CS Champion to help you prepare. When you complete the programme and pass the test you will receive your CSA certificate AND your school will receive the bursary of £920.

[Preparing to take the CSA test - short course - 31 March 16:30 – 19:30](#)

[Preparing to take the CSA test - short course – 1 April 15:30 – 18:30](#)

[Preparing to take the CSA test - short course – 22 April 15:30 – 18:30](#)

[Preparing to take the CSA test - short course – 6 May 15:30 – 18:30](#)

[Preparing to take the CSA test - short course – 2- May 15:30 – 18:30](#)

[Preparing to take the CSA test - short course – 10 June 15:30 – 18:30](#)

[Preparing to take the CSA test - short course – 24 June – 15:30 – 18:30](#)

[Preparing to take the CSA test - short course – 8 July – 15:30 – 18:30](#)

As a fun incentive we are sending some encouragement by offering an **Easter egg prize** if you complete and pass your CSA test before Easter Sunday.



Primary CPD

[Getting started with Y5 – remote](#) 28 April 15:45 – 17:15

[Teaching key stage 1 computing - Module 1 - remote](#) 27 & 29 April 13:30 – 15:40

[Teaching key stage 2 computing - Module 1 - remote](#) 9 & 11 May 13:30 – 15:40

[Leading Primary computing - remote](#) 10 May 9:00 – 15:00 & 17 May 9:00 – 14:30

[Getting started with Y4 – remote](#) 11 May 15:45 – 17:15

[Getting started with Y3 – remote](#) 12 May 15:45 – 17:15

[Getting started with Y6 – remote](#) 18 May 15:45 – 17:15

[Teaching key stage 1 computing - Module 2 - remote](#) 23 & 25 May 13:30 – 15:30

[Teaching key stage 2 computing - Module 2 - remote](#) 6 & 8 June 13:30 – 15:40

London & Home Counties Computing Hub courses

We can support you!

What do you need?

FREE computing curriculum check up

We can complete a 30-60 minute curriculum review of your computing provision in your primary or secondary school and help you develop your computing curriculum through a needs analysis.



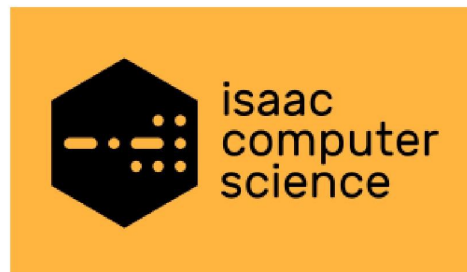
Take the opportunity to have a 'Health check' where we can find out more about the delivery of computing in your school.

We can generate a report that will identify how you can utilise the wider range of free support we provide, including: CPD, mentoring, coaching, and resource lending.

[Request needs analysis form](#)

ISAAC courses

A Level Computing support.



Teacher CPD: New to A level Programming Fundamentals

Teacher CPD: Using online IDEs to structure programming lessons and provide timely feedback

Support your A Level Computing students with **student booster sessions:**

To see all the up and coming events click on the link below.

[Link to events](#)

For your students

Careers in technology Bitesize

Technology panel discussion with Rory Reid

Rory Reid talks to three people who work in the technology sector about what life is really like in their varied roles. They reveal their stories about how they got started, their personal experiences and challenges they have overcome, as well what the future career opportunities could be in their job sector.

Meet the panellists

Ana Couto
EMEC

Lottie Moor
TikTok

Siwan Owen
Electronic Arts (EA)

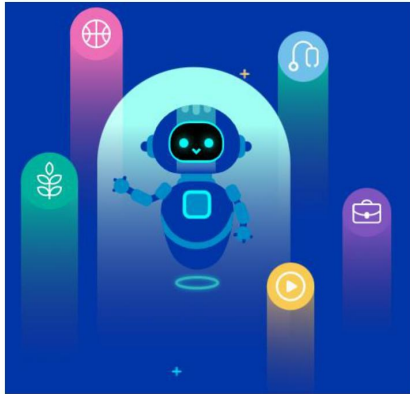


[Follow the link](#)

Engaging and Fun!

Cyber Explorers

Careers of the future demand digital skills



A fun, free and interactive learning platform for future digital superstars. An exciting addition to UK curriculum delivery or after school activities.

- It is developed for 11-14 year old students with
- Multiple challenges and character career paths to explore.
- Badges earned as students navigate through Cyber City.
- An exciting ultimate challenge to put cyber skills to the test.
- 10 - 15 min learning time per episode.
- 100% Free. No ads. No subscription fees

[Register your school](#)

Digital Schoolhouse

Rabbids Coding



Digital Schoolhouse and Ubisoft Reflections have launched a new suite of **free downloadable learning resources** to accompany Rabbids Coding game

Rabbids Coding introduces learners of all ages to the basics of programming and algorithmic logic through a series of fun, increasingly challenging, levels set within the chaotic Rabbids universe. In each level the player will have to find the best algorithm with the smallest number of code blocks to achieve the goal.

[Download learning resources](#)